



## FARIDA A 65M LANDING CRAFT

### TECHNICAL SPECIFICATION - LANDING CRAFT

SHIP'S NAME	FARIDA A
CLASSIFICATION	AMERICAN BUREAU OF SHIPPING
IMO NO	9789611
CALL SIGN	A6E2068
BUILDER	MANDOVI DRYDOCKS, GOA, INDIA
BUILT	2015 (AGW, WP)
HULL NO	106
FLAG / PORT OF REGISTRY	ABU DHABI, UNITED ARAB EMIRATES OFCO
OWNERS	OFCO OFFSHORE SUPPORT & LOGISTIC SERVICES

### PRINCIPAL PARTICULARS

LENGTH OVERALL	65.60M
LENGTH W.L.	61.00M
BREADTH MOULDED	14.20M
DEPTH MOULDED	4.25M
DESIGNED DRAFT	3.00M
SPEED	10 KNOTS (+/- 10%)
GRT / NRT / DWT	approx 1070 / 325 / 1500
CLEAR DECK SPACE	appro 570 m2
RAMP	approx L8 x B9

### TANK CAPACITY

FO (APPROX)	Approx 526 M <sup>3</sup>
FWT (APPROX)	Approx 58 M <sup>3</sup>

### DECK EQUIPMENT

ANCHOR WINDLASS	ELECTRO-HYDRAULIC 2 WINCHES FORWARD & 1 AFT
ANCHOR	2 x 1590 KG(BOW) & 1 x 900 KG (AFT)
STEERING	ELECTRO-HYDRAULIC PUMP JASTRAM, CANADA

### ACCOMMODATION / SAFETY

SINGLE CABIN	4 x 1 BERTH CABIN
2 BERTH CABIN	4 x 2 BERTH CABIN
4 BERTH CABIN	NIL

### PUMPS

FIRE/GC/BILGE PUMP	CA-80-10-180 (3X)40M <sup>3</sup> /HR (1X) 60M <sup>3</sup> / HR
EMERGENCY FIRE PUMP	CA50/7A 30M <sup>3</sup> / HR
FUEL OIL TRANSFER PUMP	BT-HM38D4-F 5M3/HR
SEWAGE TRANSFER	CA-40-1 3M <sup>3</sup> /HR
OWS	OCEAN CLEAN   1.0 M <sup>3</sup> /HR   (GERMANY)
STP	ACO MARINE   15 MEN   (GERMANY)

### MACHINERY

MAIN ENGINES	2x YANMAR-6AYM-WET 2 x 829HP / 1900 RPM
GEAR BOX	2 x REINTJES WAF364L (RATIO 4.920:1)
MAIN GENERATOR (2 NOS)	YANMAR 4HAL2-TN 99KW (380V/50HZ/3PH)
FUEL SPECIFICATION	DIESEL FUEL
BOW THRUSTER	ZF BRAND / 350HP COUPLED YANMAR ENGINE (350hp @ 1950rpm)

### LSA / FFA

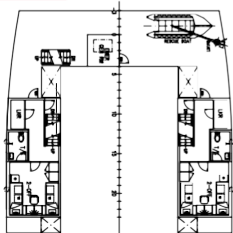
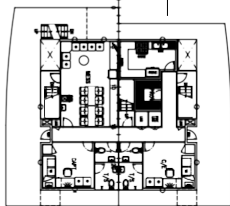
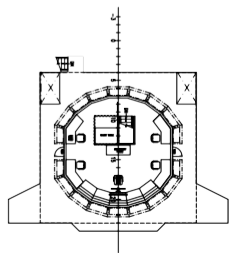
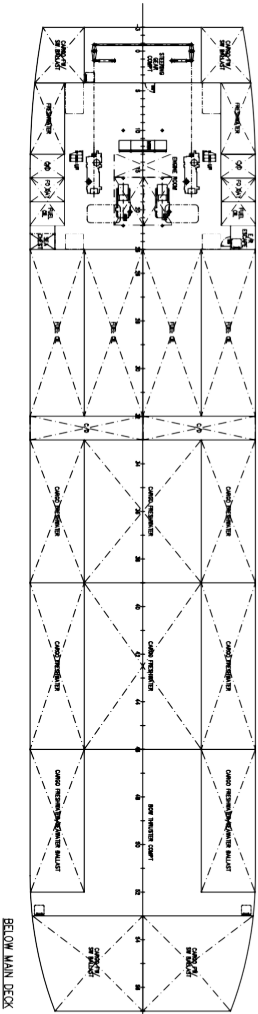
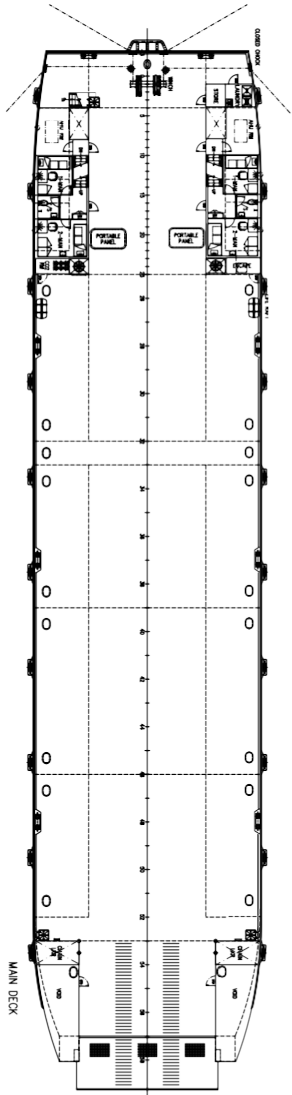
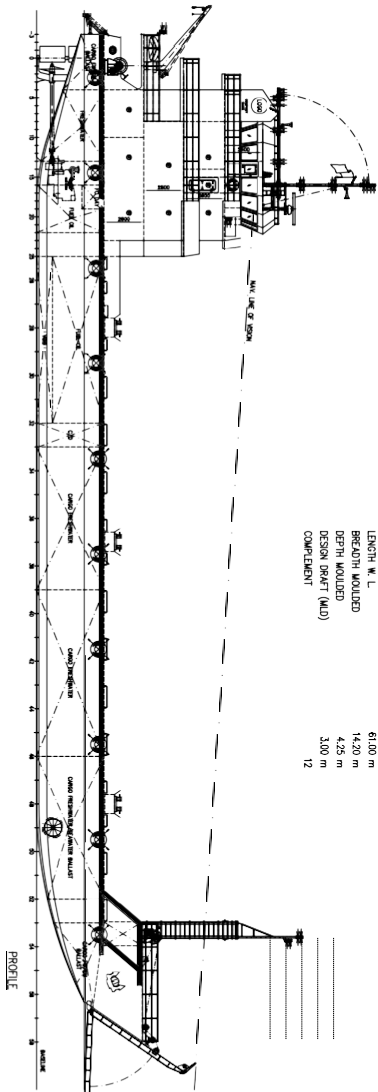
RESCUE BOAT	1 x 6 PERSON 25HP ENGINE
FIRE ALARM SYSTEM	CONSILIUM (OR EQUIVALENT)
LIFE JACKET	AS PER CLASS
DRY POWDER	AS PER CLASS
LIFE RAFT	AS PER CLASS
FIRE EXTINGUISHERS	AS PER CLASS
FIXED CO2 SYSTEM	AS PER CLASS

### NAVIGATION / COMMUNICATION EQUIPMENT

SPEED LOCK	WALKER 7070 MK 2
ECHO SOUNDER	KODEN
GMDSS WALKIE TALKIE VHF	SAMYUNG A3
DSC	SAMYUNG
RADAR	KODEN
EPIRB	JOTRON
RADAR (2)	SIMRAD
SART	JOTRON
INTERCOM / PA SYSTEM	JOTRON
GPS NAVIGATOR	KODEN
NAVTEX RECEIVER & PRINTER GYRO COMPASS	JMC SPERRY MARINE
MAGNETIC COMPASS	AUTONAUTIC
AUTOPILOT	NAVITRON
BNWAS	SAMYUNG
SSAS/LRIT	SAILOR
AIS	MCMURDO
SOUND POWERD TEL	JOTRON - CIS 3100
MF/HF TRANSCEIVER	SAMYUNG
SECONDARY GPS	JMC
ECDIS	
SVDR	
Fixed H2S System	

**ABS RECOMMENDS TO INSPECT DIMENSIONS AND OR KICK  
PLATE ON THE DECK BELOW BELONGING TO THE MAIN DECK**

LENGTH OVERALL (over HULL) 61,000 m  
 LENGTH OVERALL (over HULL) 61,000 m  
 BREADTH MOULDED 14,200 m  
 DEPTH MOULDED 4,225 m  
 DESIGN DRAFT (MLD) 3,000 m  
 COMPLEMENT 12



REVIEWED

Details of these areas are as indicated in the ABS plan.



SASASHIP		SASASHIP	
1	CONSTRUCTION CODE	2	CLASSIFICATION
3	DESIGN CODE	4	DESIGN CLASSIFICATION
5	DESIGN CODE	6	DESIGN CLASSIFICATION
7	DESIGN CODE	8	DESIGN CLASSIFICATION
9	DESIGN CODE	10	DESIGN CLASSIFICATION
11	DESIGN CODE	12	DESIGN CLASSIFICATION
13	DESIGN CODE	14	DESIGN CLASSIFICATION
15	DESIGN CODE	16	DESIGN CLASSIFICATION
17	DESIGN CODE	18	DESIGN CLASSIFICATION
19	DESIGN CODE	20	DESIGN CLASSIFICATION
21	DESIGN CODE	22	DESIGN CLASSIFICATION
23	DESIGN CODE	24	DESIGN CLASSIFICATION
25	DESIGN CODE	26	DESIGN CLASSIFICATION
27	DESIGN CODE	28	DESIGN CLASSIFICATION
29	DESIGN CODE	30	DESIGN CLASSIFICATION
31	DESIGN CODE	32	DESIGN CLASSIFICATION
33	DESIGN CODE	34	DESIGN CLASSIFICATION
35	DESIGN CODE	36	DESIGN CLASSIFICATION
37	DESIGN CODE	38	DESIGN CLASSIFICATION
39	DESIGN CODE	40	DESIGN CLASSIFICATION
41	DESIGN CODE	42	DESIGN CLASSIFICATION
43	DESIGN CODE	44	DESIGN CLASSIFICATION
45	DESIGN CODE	46	DESIGN CLASSIFICATION
47	DESIGN CODE	48	DESIGN CLASSIFICATION
49	DESIGN CODE	50	DESIGN CLASSIFICATION
51	DESIGN CODE	52	DESIGN CLASSIFICATION
53	DESIGN CODE	54	DESIGN CLASSIFICATION
55	DESIGN CODE	56	DESIGN CLASSIFICATION
57	DESIGN CODE	58	DESIGN CLASSIFICATION
59	DESIGN CODE	60	DESIGN CLASSIFICATION
61	DESIGN CODE	62	DESIGN CLASSIFICATION
63	DESIGN CODE	64	DESIGN CLASSIFICATION
65	DESIGN CODE	66	DESIGN CLASSIFICATION
67	DESIGN CODE	68	DESIGN CLASSIFICATION
69	DESIGN CODE	70	DESIGN CLASSIFICATION
71	DESIGN CODE	72	DESIGN CLASSIFICATION
73	DESIGN CODE	74	DESIGN CLASSIFICATION
75	DESIGN CODE	76	DESIGN CLASSIFICATION
77	DESIGN CODE	78	DESIGN CLASSIFICATION
79	DESIGN CODE	80	DESIGN CLASSIFICATION
81	DESIGN CODE	82	DESIGN CLASSIFICATION
83	DESIGN CODE	84	DESIGN CLASSIFICATION
85	DESIGN CODE	86	DESIGN CLASSIFICATION
87	DESIGN CODE	88	DESIGN CLASSIFICATION
89	DESIGN CODE	90	DESIGN CLASSIFICATION
91	DESIGN CODE	92	DESIGN CLASSIFICATION
93	DESIGN CODE	94	DESIGN CLASSIFICATION
95	DESIGN CODE	96	DESIGN CLASSIFICATION
97	DESIGN CODE	98	DESIGN CLASSIFICATION
99	DESIGN CODE	100	DESIGN CLASSIFICATION