



OFCO EAGLE I

5150 BHP, 65 BP, Anchor Handling Tug Supply Vessel

PRINCIPAL PARTICULARS

Length Overall :	52.93m
Breadth Moulded:	13.80m
Depth Moulded :	5.5m
Draft (Max) :	4.79m
GRT/NRT :	1373/411
Year of Built :	2009
Place of Built :	China
Class :	American Bureau of Shipping
Notation :	A1 (E) Offshore Support Vessel AH + Towing vessel + Fire Fighting Class 1 + AMS + DPS-1
Flag :	ST. Vincent and the Grenadines
Call Sign :	J8B5614

PERFORMANCE

Maximum Speed :	13 knots
Economic Speed :	10 knots
Type of Fuel :	Marine Gas Oil
Fuel Consumption:	19m ³ /24 hrs @ maximum speed 12m ³ /24 hrs @ economic speed
Bollard Pull :	65 MT

CARGO CAPACITIES

Deadweight :	1200mt
Deck Cargo :	550mt
Deck Strength :	7mt/m ² uniform loading
Clear Deck Area :	330m ²
Fuel Oil :	380m ³
Fresh Water :	200m ³
Ballast/Drill Water:	375m ³
Liquid Mud :	247m ³
Cement Tank :	180m ³ (4 x 45m ³)
Freezer/Chiller :	10m ³ /10m ³
Foam/Detergent :	10m ³ /10m ³
Rig Chain Locker:	NIL

PUMPS

Fuel Oil :	1 x 100m ³ /h @ 60m head
Fresh Water :	1 x 75 m ³ /h @ 60m head
SWB/Drill Water :	1 x 75m ³ /h @ 60m head
Liquid Mud :	2 x 75m ³ /h @ 80m head
Bilge/Ballast :	2 x 60m ³ /h @ 45m head
GS/Fire Pump :	1 x 90m ³ /h @ 42m head
Bulk Cement :	2 x 60m ³ /h @ 60m head 2 x 20.5m ³ /min @ max 7.5 bar air compressors

PROPULSION SYSTEM

Main Engines :	2 x 1920kW (2,575 BHP): @ 1600rpm Caterpillar 3516B
Propulsion :	2 x CPP in Kort Nozzles; Berg Propulsion
Bow Thruster Engine:	1 x 485kW (650 BHP) @ 1800rpm Caterpillar 3412C
Bow Thruster :	1 x 440kW electric-driven brand HRP 4009 TT; tunnel type (CPP); 6T thrust
Stern Thruster :	NIL
Steering Gear :	2 x Palmarine PEH2602; 2.6T; 45 deg
Rudders :	2 x Becker Flap Type

GENERATORS

Main Generators :	3 x 320kW @ 1800rpm Caterpillar / 3406 Dita c/w Leroy Somer LSAM47.2S2 rated at 320kW/440V/3Ph/60Hz
Emergency Generators:	1 x 74kW @ 1800rpm Caterpillar / C4.4 rated at 74kW/440V/3Ph/60Hz
Shaft Alternator :	NIL

ACCOMMODATION

Berths :	4 x 1 berth cabins = 4
:	4 x 2 berth cabins = 8
:	4 x 4 berth cabins = 16
:	2 x 6 berth cabins = 12
Total :	40
Hospital :	1 x 1 berth cabin = 1

All cabins fully air-conditioned and come with attached washrooms.



OFCO EAGLE I

5150 BHP, 65 BP, Anchor Handling Tug Supply Vessel

DECK EQUIPMENT

Anchor Windlass :	1 x electro-hydraulic Zicom/HWL-9/38x2
- Drum :	NIL
- Gypsies :	Suit for 38mm chains rated pull 9mt @ 12m/min
- Warping Drum :	400mm (dia.) x 485mm (L) rated pull 9mt @ 12m/min
Bow Anchors :	2 x 1200kg HHP AC-14 anchors
Anchor Chains :	220m (L) x 38mm (dia.) Grade K3 (each side)
Capstan :	2 x 5mt @ 0-15m/min electro- hydraulic; Zicom/HCAP-5
Towing/AH Winch:	1 x electro-hydraulic double drum; Zicom/HWTW-150/52x2
- Upper Drum Cap (Tow):	1000m (L) x 52mm SWR
- Lower Drum Cap (AH):	1000m (L) x 52mm SWR
- Line Pull :	150mt @ 0-2.5m/min at first layer 30mt @ 0-10m/min at first layer 10mt @ 0-40m/min at first layer
- Stall Pull :	165mt @ first layer
- Brake Capacity :	200mt static at first layer Remote control from after control stand in wheelhouse
Stern Roller :	3.5m (L) x 1.6m (dia.); SWL 200mt
Shark Jaws :	1 x electro-hydraulic Karmoeoy; SWL 300mt
Towing Pins :	2 x electro-hydraulic with turntable top flaps
Rope Reel :	1 x electro-hydraulic Zicom/HSW-5/52 Drum Capacity: 1000m (L) x 52mm SWR
Tugger Winch :	2 x 10mt @ 15m/min electro- hydraulic; Zicom/HTUG-10/20 Drum Capacity: 200m (L) x
Crane :	20mm HIAB type 220c-3; SWL 5mt SWL 13T @ 8m ; SWL 3.25T @ 24m

MISCELLANEOUS

Life Rafts :	6 x HYA-20; Type: Inflatable
Rescue Boat :	1 x YJ45KR x 6 pax (Outboard motor size -25 HP)
Oily Water Separator:	1 x HSHC-10; 1.0m ³ /h @ 30m
Water Maker :	1 x 5m ³ /day
Sewage Treatment Plant:	1 x WCB-40

RADIO & NAVIGATION EQUIPMENT

GMDSS :	1 x RC1800T; Furuno
- SSB :	1 x FS2570; Furuno
- Inmarsat C :	1 x FELCOM-15; Furuno
- VHF Radio :	2 x FM8800S; Furuno
- Navtex Receiver:	1 x NX700B; Furuno
- SART :	2 x S4; McMurdo
- EPIRB :	1 x E3; McMurdo
- Portable VHF Radios:	3 x FM8; Furuno
Radar :	1 x FR2117MAK3; Furuno 1 x FR1945MAK3; Furuno
Echo Sounder :	1 x FE700; Furuno
GPS :	1 x DGPS GP150; Furuno
Gyrocompass :	1 x standard 22; Furuno
Autopilot :	1 x NP60; Anschuetz
Magnetic Compass:	1 x SR165; Saura
Weather Fax :	1 x FAX408; Furuno
Speed Log :	1 x DS80; Furuno
Wind Indicator :	1 x WALK2050MK2; Walk
AIS :	1 x FA150; Furuno
DP :	Marine Technology Bridge Mate DP1
Joystick :	Marine Technology Bridge Mate JX
PA System :	Yes

All safety, radio and navigation equipment are in full compliance with the SOLAS/ABS requirements.

FIRE FIGHTING EQUIPMENT

External

FIFI System :	Class 1 with water curtain all round
Fire Pump :	2 x 1550m ³ /h @ 128mhc, FFS / SFP 250 x 350 driven by front PTO of M/E
Monitors – Water/Foam:	1 x 300 - 1200m ³ /h, FFS / 1200 / 300 LB
Monitors – Water:	1 x 1200m ³ /h, FFS 1200 LB
Oil Dispersant System:	2 x 6m (6 nozzles) spray booms; FFS

Internal

Emergency Fire Pump:	1 x 65CWY-40D; 25m ³ /h @ 45m head; Zhenhua Pump Industry
CO2 System :	1 x WLS68L X 12; Wuhan Weili Fire Control

Fire Detection & Alarm System in living spaces and engine room.

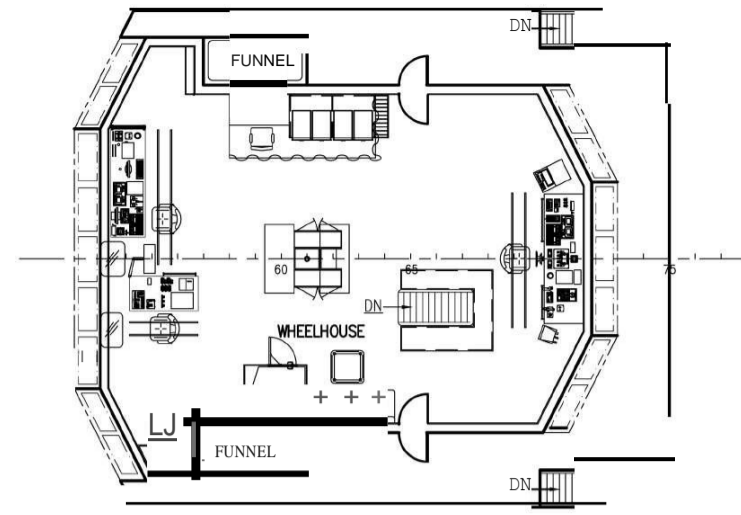
* RECOMMENDATION: A TOE BOARD OR KICK PLATE TO BE INSTALLED ON THE DECK BELOW THE LOWER RAIL COURSE IN ORDER TO REDUCE THE LIKELIHOOD OF INJURY DUE TO A FOOT/LEG SLIPPING UNDER THE LOWER RAIL COURSE AND OVER THE EDGE OF THE BRIDGE WING DECK.

REVIEWED

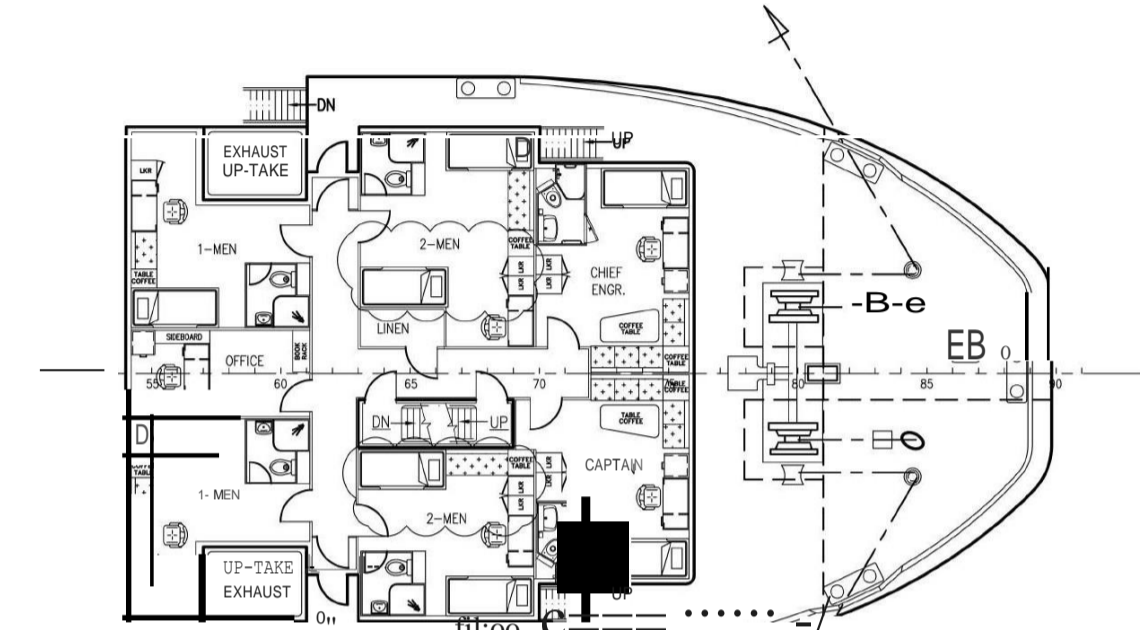
Details of this review are as indicated in the ABS letter

ABS

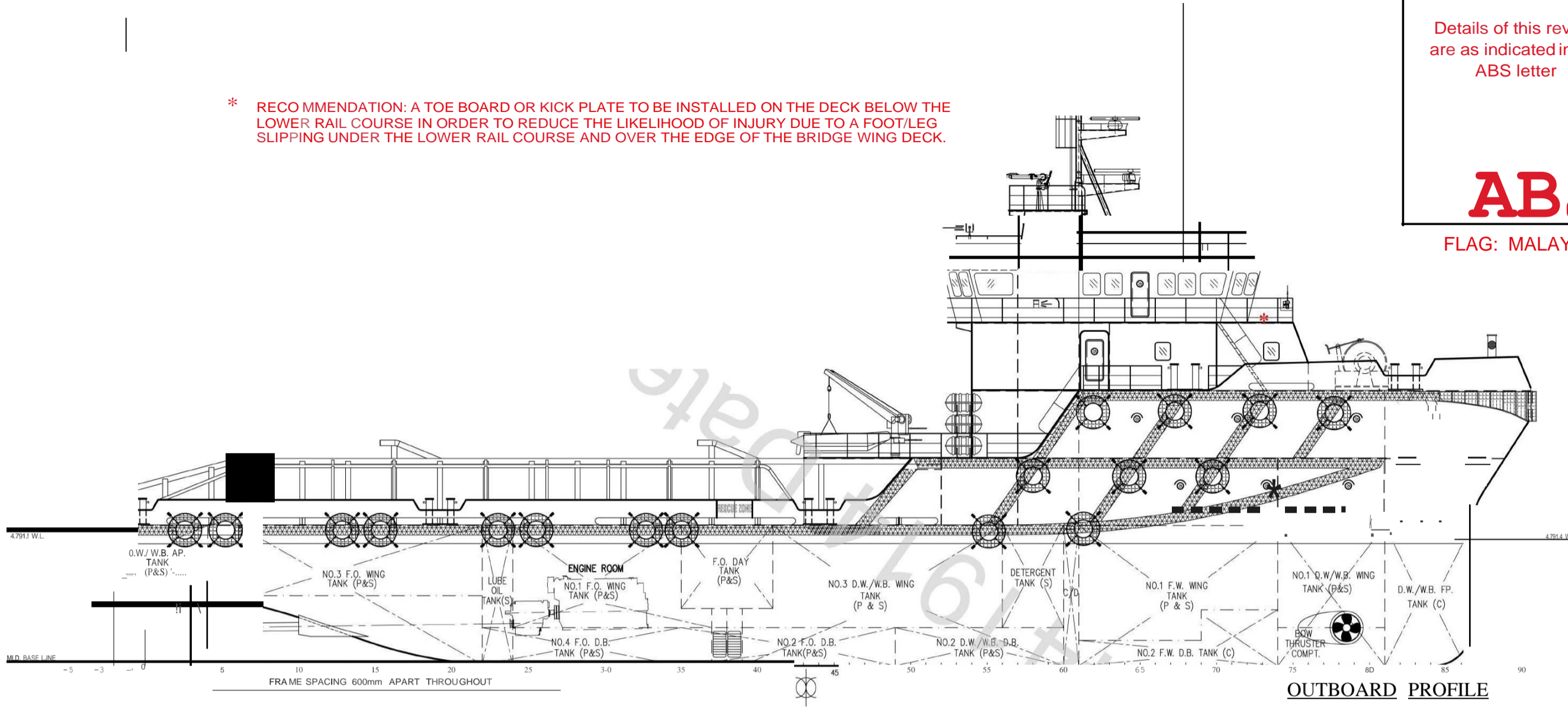
FLAG: MALAYSIA



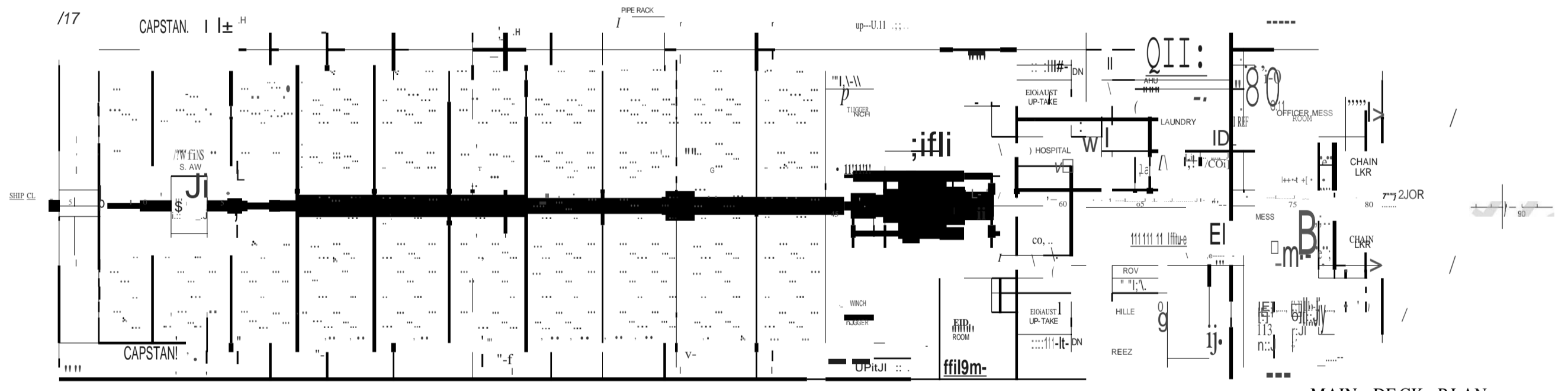
NAV. BRIDGE DECK



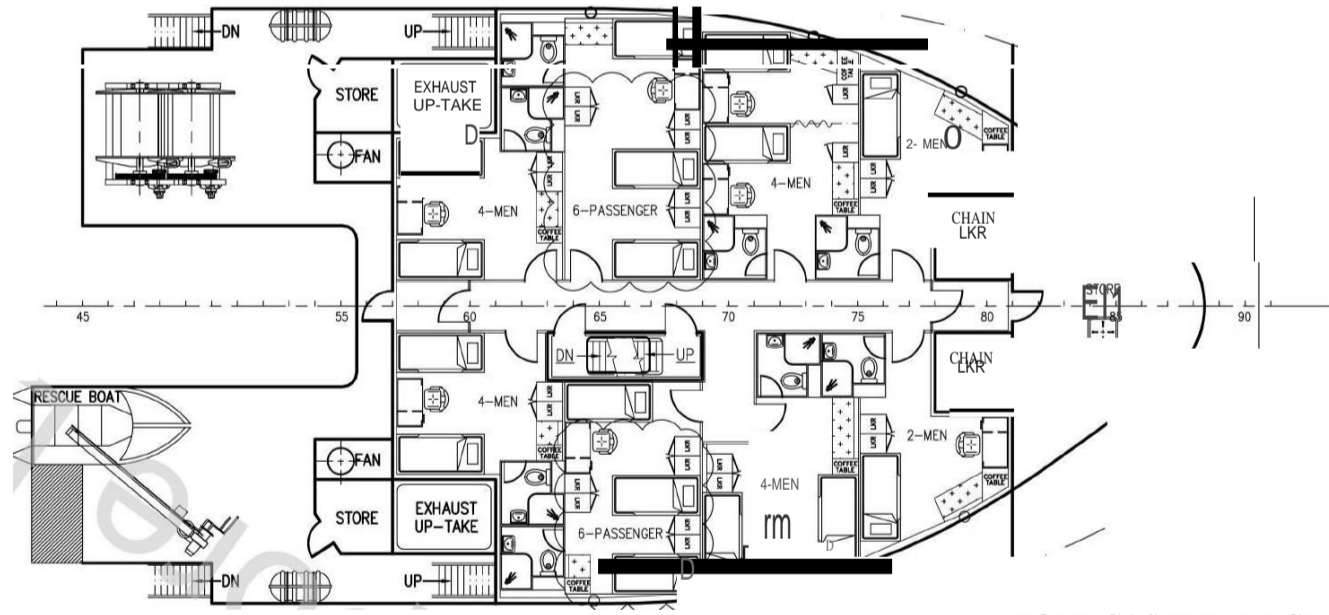
UPPER FORECASTLE DECK



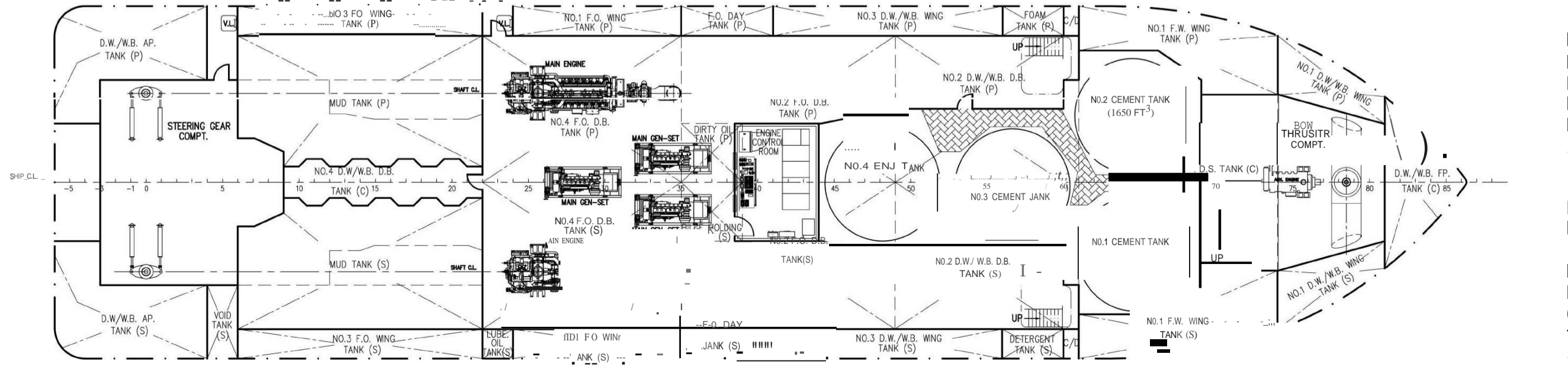
OUTBOARD PROFILE



MAIN DECK PLAN



FORE CASTLE DECK



BELOW MAIN DECK PLAN

PRINCIPAL DIMENSIONS

LENGTH OVERALL	57.50 M
LENGTH WATERLINE	55.05 M
LENGTH BETWEEN PERPENDICULARS	52.00 M
BREADTH MOULDED	13.80 M
DEPTH MOULDED	5.50 M
DESIGN DRAFT MOULDED	4.79 M
ACCOMMODATION	
CREW -	28 MEN
PASSENGER	12 MEN
FUEL OIL	375 M ³
FRESH WATER	200 M ³
DRILL WATER	365 M ³
MUD (S.G. - 2.5)	250 M ³
DRY BULK TANKS(4 x 1650 FT ³ = 6600 FT ³)	186 M ³
CLEAR DECK AREA (DECK LOADING = 7 T/M ²)	330 M ²
TOTAL POWER	5150 HP
SPEED	13.0 KNOTS

SHIP YARD: WEIHAI XINGHAI SHIPYARD, HULL NO.: 07MZC006; GUIJIANG SHIPBUILDING CO., LTD. CSSC, HULL NO.: GJ01-2007-01

NO.	DESCRIPTION	DATE
1.	COMPLET AMENDED AS 40	UMINGYE 08.10.15
2.	UPDATED AS PER CAPACITY PLAN	PangJJ 01.12.09
3.	AMENDED AS PER YARD'S COMMENTS	YUDIN 08.03.09

BUILDER: **P.T. BATAMEC**

CONSULTANT: **KHIAM CHUAN MARINE PTE LTD**
 31, BUKIT BATOK CRESCENT, #01-53, THE SPLENDOUR
 SINGAPORE 658070 Tel: +65- 67753383 Fax: +65- 67753788
 E-mail: khamchuan@kcm.com.sg

PROJECT: 5150HP ANCHOR HANDLING/TOWING SUPPLY VESSEL

TITLE: **GENERAL ARRANGEMENT**

THIS DOCUMENT AND THE INFORMATION IT CONTAINS IS COPYRIGHT AND REMAINS THE PROPERTY OF KHIAM CHUAN MARINE PTE LTD. IT IS NOT TO BE COPIED IN WHOLE OR IN PART OR DISCLOSED TO ANY THIRD PARTY FOR ANY PURPOSE WHATSOEVER WITHOUT PRIOR WRITTEN CONSENT.

CLASSIFICATION	HULL NO.	SSSsi
DRAWN (m L A)	CHECKED	SCALE
20-12-04		1.125
DRAWING NUMBER	REV.	
KCM/Q468(A)-G1	C1	