



NEWCRUZ 331

FLAT TOP BARGE BALLASTABLE 330ft x 100ft x 20ft DECK LOADING OF 20.0 Ton/m¹

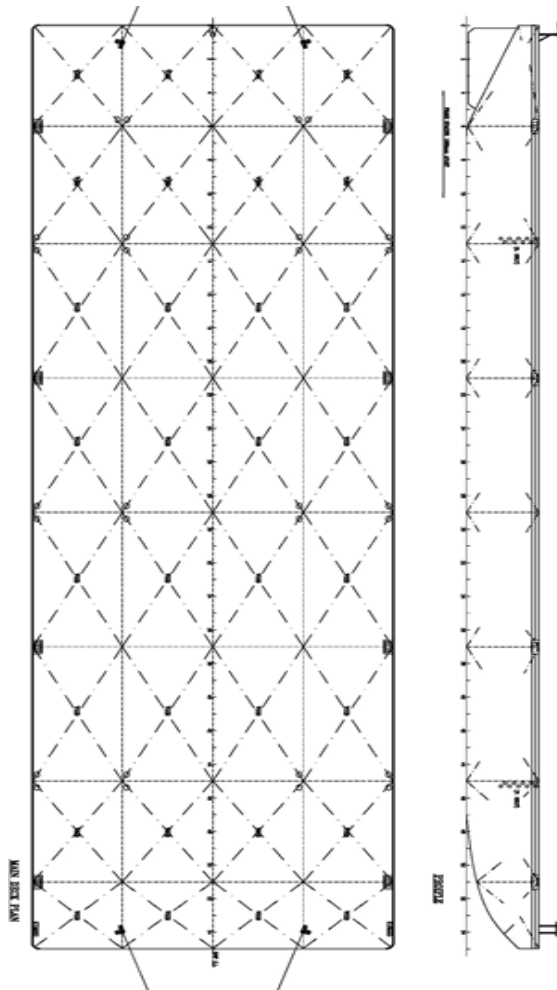
OWNED AND MANAGED BY ALLIANZ MIDDLE EAST SHIP MANAGEMENT LLC

MAIN PARTICULARS

Year Built	2011
Flag	Indonesia
Class	BKI &ABS (Dual Class) ◆A1, Steel Deck Barge
Length Overall	330 ft (100.58m)
Breadth Moulded	100 ft (30.48m)
Depth Moulded	20 ft (6.10m)
Design Draft	4.5m (Approx.)
Deadweight	10,000 Tons (Approx.)
GRT / NRT	4955T / 1486T
Deck Strength	20 Ton/m'

SCANTLING

Deck Plating	20.00mm
Bottom Plating	14.00mm
Deck Plating	14.00/16.00mm
Longitudinal/Transverse Bulkhead	10.00mm
Mooring Bollards	8 double bits
Towing Brackets	4 with 2 x 80 Tons SWL. Schmitt are fitted on main deck fwd and aft
Anchor Winch	5 Tons hand operated
Anchor	2,100kg
Fender	16mm x 600mm, double plate c/w slot welds to be fitted all round
Manhole	1 (600 x 400mm) for each tank with clear opening oval flush type, studs, and nuts to be of stainless steel
Navigation Light	Bow lights (port and starboard) and stern light



*Particulars are believed to be correct but not guaranteed. All figures given are approximate only. Owners reserve the right to amend the specifications without notification.