

AL SHAHEED 1



GENERAL

CLASS NOTATION	Tasneef C * TUG; UNRESTRICTED NAVIGATION, INWATERSURVEY
IMO NUMBER	9788215
CALL SIGN / MMSI	A6E2407/470754000
DELIVERY DATE	28 JULY 2016
FLAG	UAE
PORT OF REGISTRY	ABU DHABI
SHIPBUILDER	SANMAR TUZLA TURKEY

DIMENSIONS

LENGTH OVERALL	18.7 m
BREADTH (MOULDED)	9.2 m
DRAFT MOULDED	4 m
GRT / NRT	145/43

PERFORMANCE

BOLLARD PULL (AHEAD)	33 ton
BOLLARD PULL (ASTERN)	33 ton
SPEED AHEAD (MAXIMUM)	12 knots

FIRE FIGHTING

FIRE FIGHTING CLASS	NONE CLASSED FIFI 0
FIRE FIGHTING PUMPS	600 m ³ /hrs
MONITORS (WATER MODE)	water spray

ENGINE AND PROPULSION SYSTEM

MAIN ENGINES	2X970 KW CATERPILLAR C32
TOTAL POWER	2X1300 BHP
AUXILIARY ENGINES	CATERPILLAR
GENSET	C 4,4-94 KW
THRUSTERS	2 X AZIMUT VETH VZ-900X2

ACCOMODATION

TOTAL	4
SINGLE CABINS	0
DOUBLE CABINS	2

AUXILIARY EQUIPMENT

FUEL SEPARATOR	N/A
EMERGENCY FIRE PUMP	YES 15.5 m ³ /H
DIESEL	ELECTRICAL
TOWING HOOK	YES DTH 30-60

LIFE SAFING EQUIPMENT

4x EEBD, 1x EPIRB, 1x SART, 1x life throwing apparatus, 1 life rafts with 8 person , 8x life jackets, 4x Immersion suits , 4x life buoys available, 2 x MOB, 1 Fire Man 11 portable fire Exting, 1x50kg foam, BA 1Set

TANK CAPACITY

FUEL	34 m ³ (MGO)
BALLAST	10 m ³
FRESH WATER	5.8 m3
DIRTY OIL	1293 L
HYDRAULIC OIL	200 L
LUB OIL	482 L
SEWAGE	1330 L
FOAM TANK	1590 L

DECK EQUIPMENT

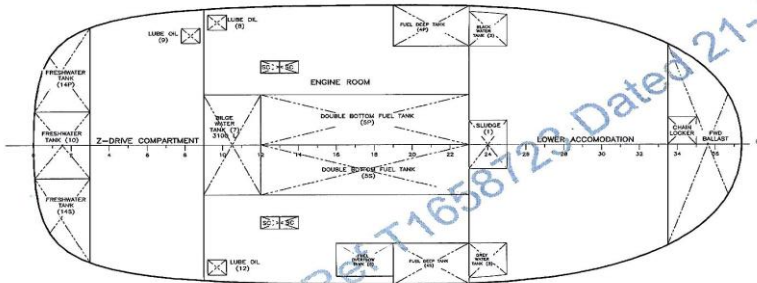
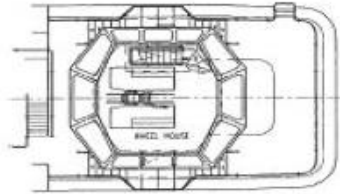
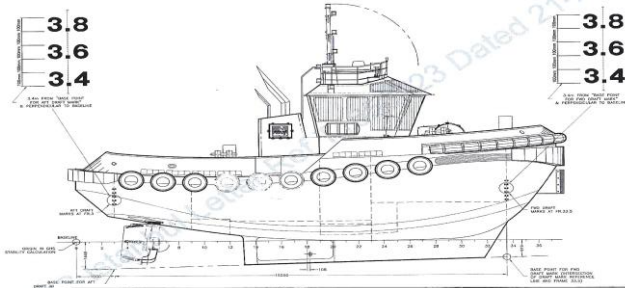
FUELFWD WINCH	JINGSU HENG WEI, single drum
FWD WINCH BRAKE	750 KN
FWD WINCH PULL	100 KN
FWD WINCH DRUM CAP	200 m / DIA 48 mm SYNTHETIC

AFT WINCH	N/A
AFT WINCH BRAKE	N/A
AFT WINCH PULL	N/A
AFT WINCH DRUM CAP	N/A
FENDERING	All around

NAUTICAL AND COMMUNICATION EQUIPMENT

AREA	GMDSS A1
MAGNETIC COMPASS	CASSENS + PLATH/TYPE 21/B561170
AIS	SIMRAD V 5035
GPS	SIMRAD BUILT IN
NR OF RADAR SYSTEM	SIMRAD PC/ABS NSSEV02
ECHO SOUNDER	SIMRAD BUILT IN
AUTOPILOT	SIMRAD AP 70
VHF HANDHELD GMDSS	2x SAILOR 3520
VHF DSC WATCH RECEIVER	SAILOR 6222/6215 MF/HF SAILOR 6301

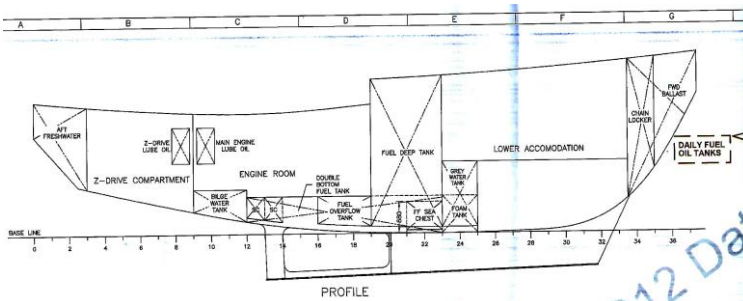
AIS/LRIT	N/A
NAVTEX	SAILOR 6004
SART	SAILOR SART II
EPIRB	SAILOR SE404-II
BRIDGE NAVIGATION ALARM SYSTEM	YES BNWAS 3000



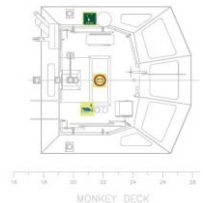
HOLD PLAN

BALLAST TANK CAPACITIES				FUEL TANK CAPACITIES				MISCELLANEOUS TANK CAPACITIES			
TANK NO.	DESCRIPTION	LOCATION	CAPACITY AT 98% (L)	TANK NO.	DESCRIPTION	LOCATION	CAPACITY AT 98% (L)	TANK NO.	DESCRIPTION	LOCATION	CAPACITY AT 98% (L)
13	FWD BALLAST TANK, CENTRE	FRAME 23.5 TOPWD	17638	5P	DOUBLE BOTTOM FUEL TANK, PORT	FRAME 12 TO 23	7735	7	SILDE WATER TANK, CENTRE	FRAME 8 TO 12	3384
				5S	DOUBLE BOTTOM FUEL TANK, STBD	FRAME 12 TO 23	7735	3	DEEP WATER TANK, STBD	FRAME 23 TO 35	1330
				4P	FUEL OR DEEP TANK, PORT	FRAME 18 TO 23	8015	2	BLACK WATER TANK, PORT	FRAME 23 TO 25	1330
				4S	FUEL OR DEEP TANK, STBD	FRAME 18 TO 23	8015	8	MAIN ENGINE LUBE OIL, PORT	FRAME 8 TO 10	241
								9	Z-DRIVE LUBE OIL, PORT	FRAME 8 TO 9	241
								12	MAIN ENGINE LUBE OIL, STBD	FRAME 9 TO 10	241
								1	SLUDGE TANK, CENTRE	FRAME 23 TO 25	1588
								6	FUEL OVERFLOW TANK, STBD	FRAME 18 TO 19	807
FRESH WATER TANK CAPACITIES											
TANK NO.	DESCRIPTION	LOCATION	CAPACITY AT 98% (L)								
10	FRESH WATER TANK, CENTRE	FRAME 0 TO 3	8778								
14P	AFT FRESHWATER TANK, PORT	FRAME 0 TO 3	8017								
14S	AFT FRESHWATER TANK, STBD	FRAME 0 TO 3	8017								
	TOTAL FRESH WATER		15612								

TANK PLAN - RAScal 1800



PROFILE



MONKEY DECK

BE PART OF A GROWING PORT COMMUNITY

800 10 20 30

www.safeen.ae

MAIN DECK PLAN

