

AL Jimi1 Tug Bout



GENERAL

CLASS NOTATION	Tasneef C * TUG; UNRESTRICTED NAVIGATION, INWATERSURVEY
IMO NUMBER	9831933
CALL SIGN / MMSI	A6E2212 /471081000
DELIVERY DATE	Mar-2018
FLAG	UAE
PORT OF REGISTRY	Abu Dhabi
SHIPBUILDER	SANMAR TURKEY
DIMENSIONS	
LENGTH OVERALL	18.70 m
BREADTH (MOULDED)	09.2 m
DRAFT MOULDED	Max 4 m
GRT / NRT	145 / 43

PERFORMANCE

BOLLARD PULL (AHEAD)	32 ton
BOLLARD PULL (ASTERN)	32 ton
SPEED AHEAD (MAXIMUM)	12 knots

FIRE FIGHTING

FIRE FIGHTING CLASS	NONE - FFS600M
FIRE FIGHTING PUMPS	600 m³/hrs
MONITORS (WATER MODE)	Foam + water spray

ENGINE AND PROPULSION SYSTEM

MAIN ENGINES	2 Cat (32)2x1.300h 2x969.5 kw
TOTAL POWER	1939 kW (2600 BHP)
AUXILIARY ENGINES	2 Cat (4.4)93.6 kw
GENSET	
THRUSTERS	2 X AZIMUT VETH VZ-900X2

ACCOMODATION

TOTAL	4
SINGLE CABINS	Nil
DOUBLE CABINS	2

AUXILIARY EQUIPMENT

FUEL SEPARATOR	Nil
EMERGENCY FIRE PUMP	YES 15.5 m³ /H
DIESEL	ELECTRIC
TOWING HOOK	YES DTH 30-60

LIFE SAFING EQUIPMENT

5x EEBD, 1x EPIRB, 1x SART, 1x line throwing apparatus, 1x 8 life rafts, 8x life jackets, 4x Immersion suits and 4x life buoys available. 2 x MOB, 1 Fire Man 12 portable fire Exting, 1x50kg foam, BA 1Set

TANK CAPACITY

FUEL	33,5 m³ (MGO)
BALLAST	Nil
FRESH WATER	16 m³
DIRTY OIL	3.4 m³
HYDRAULIC OIL	m³
LUB OIL	0.720 m³
SEWAGE	1.33 m³
FOAM TANK	1.590 m³

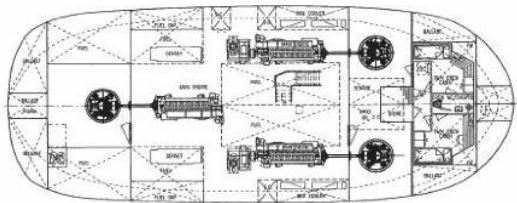
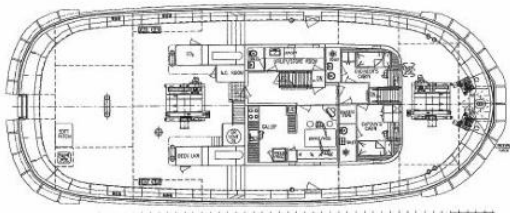
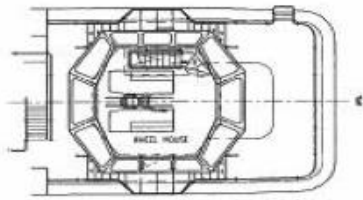
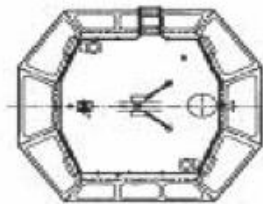
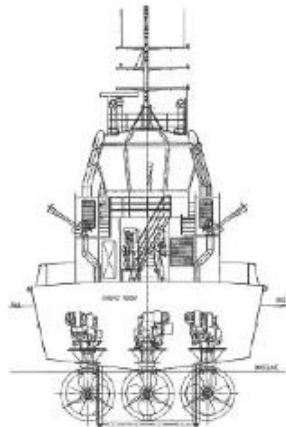
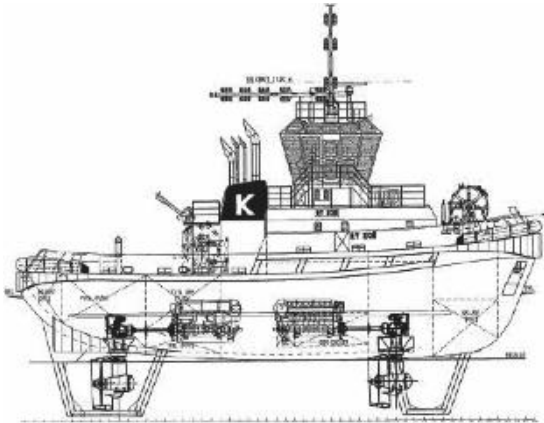
DECK EQUIPMENT

FUEL FWD WINCH	DMT TW-E100KN signal drum 100kn
FWD WINCH BRAKE	750 kn
FWD WINCH PULL	
FWD WINCH DRUM CAP	100 m / DIA 48 mm SYNTHETIC
AFT WINCH	Nil
AFT WINCH BRAKE	
AFT WINCH PULL	
AFT WINCH DRUM CAP	
FENDERING	Sausage fender +Tire Fender

NAUTICAL AND COMMUNICATION EQUIPMENT

AREA	GMDSS A1
MAGNETIC COMPASS	CSSENS&PLATH/TYPE21/B571144
AIS	SIMRAD W5035
GPS	SIMRAD BUILT IN
NR OF RADAR SYSTEM	2 RADER SIMARD PC/ABS NSS EVOZ
ECHO SOUNDER	SIMRAD
AUTOPILOT	SIMRAD AP 70
VHF HANDHELD GMDSS	2x SAILOR SP 34200
VHF DSC WATCH RECEIVER	2 VHF SAILOR 6222-6215 - MF/HF SAILOR 6301

AIS/LRIT	SAILOR 6004
NAVTEX	Sailor II
SART	SAILOR -SE406EII
EPIRB	YES
BRIDGE NAVIGATION ALARM SYSTEM	YES



BE PART OF A GROWING PORT COMMUNITY

800 10 20 30

www.safeen.ae

